



CONSUMER PRODUCTS SERVICES DIVISION

CARPENTERS MANUFACTORY LIMITED

Technical Report: (8519)078-0940
Date Received: March 20, 2019

April 01, 2019
Page 1 of 16

CARPENTERS MANUFACTORY LIMITED
HUANG JIN JI INDUSTRIAL ZONE, SHANG JIE
VILLAGE, QI SHI TOWN, DONG GUAN CITY, GUANG
DONG PROVINCE, P.R.CHINA



CARPENTERS MANUFACTORY LIMITED

Technical Report: **(8519)078-0940**

April 01, 2019

Page 2 of 16

Sample Description:

1. 榉木

2. 椴木夹板

3. 桦木夹板

4. MDF

5. 松木

BRIGHT RED PAINT(A1Y)红色油漆,ORANGE PAINT(A2Y)橙色油漆,LIGHT YELLOW PAINT(A3Y)浅黄色油漆,DARK YELLOW PAINT(A4Y)深黄色油漆,DARK GREEN PAINT(A5Y)深绿色油漆,LIGHT GREEN PAINT(A6Y)浅绿色油漆,DARK BLUE PAINT(A7Y)深蓝色油漆,LIGHT BLUE PAINT(A8Y)浅蓝色油漆,LIGHT BROWN PAINT(A9Y)浅棕色油漆,DARK BROWN PAINT(A10Y)深棕色油漆,PURPLE PAINT(A11Y)紫色油漆,DARK RED PAINT(A12Y)深红色油漆,PINK PAINT(A13Y)粉红色油漆,BEIGE PAINT(A14Y)米黄色油漆,GREY PAINT(A15Y)灰色油漆,WHITE PAINT(A16Y)白色油漆油漆,DARK ORANGE PAINT(A17Y)深橙色油漆,LIGHT PINK PAINT(A18Y)浅粉红色油漆,BLACK PAINT(A19Y)黑色油漆,NAVY BLUE PAINT(A20Y)海军蓝色油漆,CLEAR LACQUER(A21Y)透明色油漆,DARK GREY PAINT(A22Y)深灰色油漆,276C (A23Y)276C 油漆,268C (A24Y)268C 油漆

1.) 榉木

2.) 椴木夹板

3.) 桦木夹板

4.) MDF

5.) 松木

6.) BRIGHT RED PAINT(A1Y)红色油漆

7.) ORANGE PAINT(A2Y)橙色油漆

8.) LIGHT YELLOW PAINT(A3Y)浅黄色油漆

9.) DARK YELLOW PAINT(A4Y)深黄色油漆

10.) DARK GREEN PAINT(A5Y)深绿色油漆

11.) LIGHT GREEN PAINT(A6Y)浅绿色油漆

12.) DARK BLUE PAINT(A7Y)深蓝色油漆

13.) LIGHT BLUE PAINT(A8Y)浅蓝色油漆

14.) LIGHT BROWN PAINT(A9Y)浅棕色油漆

15.) DARK BROWN PAINT(A10Y)深棕色油漆

16.) PURPLE PAINT(A11Y)紫色油漆

17.) DARK RED PAINT(A12Y)深红色油漆

18.) PINK PAINT(A13Y)粉红色油漆

19.) BEIGE PAINT(A14Y)米黄色油漆

20.) GREY PAINT(A15Y)灰色油漆

21.) WHITE PAINT(A16Y)白色油漆油漆

22.) DARK ORANGE PAINT(A17Y)深橙色油漆

23.) LIGHT PINK PAINT(A18Y)浅粉红色油漆

24.) BLACK PAINT(A19Y)黑色油漆

25.) NAVY BLUE PAINT(A20Y)海军蓝色油漆

26.) CLEAR LACQUER(A21Y)透明色油漆

27.) DARK GREY PAINT(A22Y)深灰色油漆

28.) 276C (A23Y)276C 油漆

29.) 268C (A24Y)268C 油漆



CARPENTERS MANUFACTORY LIMITED

Technical Report: **(8519)078-0940**

April 01, 2019

Page 3 of 16



CARPENTERS MANUFACTORY LIMITED

Technical Report: **(8519)078-0940**

April 01, 2019

Page 4 of 16

Vendor:	CARPENTERS MANUFACTORY LIMITED / 东莞天志木制品有限公司	Sample Size:	34
Manufacturer:	N/A	Style No(s):	N/A
Buyer:	N/A	SKN/SKU No.:	N/A
Labeled Age Grade:	NOT PRESENT	PO No.:	N/A
Appropriate Age Grade:	NOT REQUESTED	Ref #:	N/A
Client Specified Age Grade:	0+	Country of Origin:	CHINA
Tested Age Grade:	ALL AGES	Assortment No.:	N/A
UPC Code:	N/A	Country Of Destination:	GLOBAL 全球
Test Starting Date:	MARCH 20, 2019		
Test Finished Date:	APRIL 01, 2019		

EXECUTIVE SUMMARY:

The sample(s) MEET the following requirement(s):

- The migration of certain elements in Category III - Scraped off toy material requirements of the European Standard, "Safety of Toys", EN 71 Part 3: 2013+A3:2018.

BUREAU VERITAS SHENZHEN CO.,LTD

Choy Hon Kwong, Adams
Senior Manager
Analytical Department

AC/is

This report shall not be reproduced except in full, without the written approval of our laboratory.



CARPENTERS MANUFACTORY LIMITED

Technical Report: **(8519)078-0940**

April 01, 2019

Page 5 of 16

RESULTS:

APPROPRIATE AGE GRADE DETERMINATION

The Appropriate Age Grade is determined with reference to the EN71: Part 1 : 2014 +A1:2018, CEN ISO/TR 8124-8:2016 Safety of toys - Part 8: Age Determination Guidelines prepared by Technical Committee CEN/TC 52 and Age Grade Determination Guidelines of the Consumer Product Safety Commission (CPSC).

Note : The most stringent age grade from the Labeled Age Grade and the Appropriate Age Grade will be used for testing.

Note : If the client does not specify an age grade for testing or request Bureau Veritas Consumer Products Services, Inc. to determine an appropriate age grade, the labeled age grade will be used for testing.



CARPENTERS MANUFACTORY LIMITED

Technical Report: **(8519)078-0940**

April 01, 2019

Page 6 of 16

RESULTS:

MIGRATION OF CERTAIN ELEMENTS (European Standard EN 71 Part 3: 2013+A3:2018)

Test European Standard EN 71 Part 3: 2013+A3:2018, Annex E.

Method :

Class: Category III - Scraped off toy material

Sample Identity	Color	Location	Style
A.	Bright red coating	Bright red paint (A1Y)	F
B.	Orange coating	Orange paint (A2Y)	G
C.	Light yellow coating	Light yellow paint (A3Y)	H
D.	Dark yellow coating	Dark yellow paint (A4Y)	I
E.	Dark green coating	Dark green paint (A5Y)	J
F.	Light green coating	Light green paint (A6Y)	K
G.	Dark blue coating	Dark blue paint (A7Y)	L
H.	Light blue coating	Light blue paint (A8Y)	M
I.	Light brown coating	Light brown paint (A9Y)	N
J.	Dark brown coating	Dark brown paint (A10Y)	O
K.	Purple coating	Purple paint (A11Y)	P
L.	Dark red coating	Dark red paint (A12Y)	Q
M.	Pink coating	Pink paint (A13Y)	R
N.	Beige coating	Beige paint (A14Y)	S
O.	Grey coating	Grey paint (A15Y)	T
P.	White coating	White paint (A16Y)	U
Q.	Dark orange coating	Dark orange paint (A17Y)	V
R.	Light pink coating	Light pink paint (A18Y)	W
S.	Black coating	Black paint (A19Y)	X
T.	Navy blue coating	Navy blue paint (A20Y)	Y
U.	Clear lacquer	Clear lacquer paint (A21Y)	Z
V.	Dark grey coating	Dark grey paint (A22Y)	AA
W.	Dark purple coating - 276C	276C (A23Y)	AB
X.	Bright purple coating - 268C	268C (A24Y)	AC
Y.	Light brown wood	Wooden board	A
Z.	Light flesh /flesh wood	Wooden board	B
AA.	Bright light flesh /bright flesh wood	Wooden board	C
AB.	Dark brown wood	Wooden board	D
AC.	Brown wood	Wooden board	E



CARPENTERS MANUFACTORY LIMITED

Technical Report: **(8519)078-0940**

April 01, 2019

Page 11 of 16

RESULTS:

MIGRATION OF CERTAIN ELEMENTS (European Standard EN 71 Part 3: 2013+A3:2018)

Test European Standard EN 71 Part 3: 2013+A3:2018, Annex E.

Method :

Class: Category III - Scraped off toy material

Analyte	Requirement (mg/kg)	Result (mg/kg)					
		Sample ID					
	Category III	Y.	Z.	AA.	AB.	AC.	-
Aluminium (Al)	70000	LT 2	LT 2	5	44	LT 2	-
Arsenic (As)	47	LT 2	LT 2	LT 2	LT 2	LT 2	-
Boron (B)	15000	LT 2	LT 2	LT 2	3	LT 2	-
Barium (Ba)	18750	LT 2	3	10	7	LT 2	-
Cadmium (Cd)	17	LT 2	LT 2	LT 2	LT 2	LT 2	-
Cobalt (Co)	130	LT 2	LT 2	LT 2	LT 2	LT 2	-
Chromium III (Cr III)	460	LT 0.05	0.058	0.11	0.12	LT 0.05	-
Chromium VI (Cr VI)	0.2						
Copper (Cu)	7700	LT 2	LT 2	LT 2	LT 2	LT 2	-
Mercury (Hg)	94	LT 2	LT 2	LT 2	LT 2	LT 2	-
Manganese (Mn)	15000	LT 2	3	50	77	16	-
Nickel (Ni)	930	LT 2	LT 2	LT 2	LT 2	LT 2	-
Lead (Pb)	23	LT 2	LT 2	LT 2	LT 2	LT 2	-
Antimony (Sb)	560	LT 2	LT 2	LT 2	LT 2	LT 2	-
Selenium (Se)	460	LT 2	LT 2	LT 2	LT 2	LT 2	-
Tin (Sn)	180000	LT 2	LT 2	LT 2	3	LT 2	-
Organic tin	12	LT 2	LT 2	LT 2	7	LT 2	-
Strontium (Sr)	56000	LT 2	8	3	10	LT 2	-
Zinc (Zn)	46000	LT 2	5	16	5	4	-
Mass of trace amount (gram)		-	-	-	-	-	-
Conclusion		Pass	Pass	Pass	Pass	Pass	-

mg/kg = milligrams per kilogram (ppm=parts per million)

LT = Less Than

* = Average of duplicate analysis

FR = Failed Result

Organic tin = migration of total organic tin is expressed as tributyl tin cation content in mg/kg

= Verified results (see note)

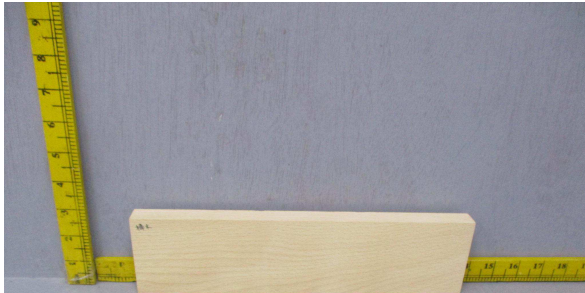
Remark: - Results of Cr III and Cr VI were reported as sum of soluble Chromium content unless specified.
 - Result(s) of organic tin was (were) calculated while assuming the tin content wholly contributed from tributyltin cation unless specified.

Note: If soluble chromium content or soluble tin content exceeded the screening limits of soluble chromium (VI) or organic tin content, the results were verified by below method

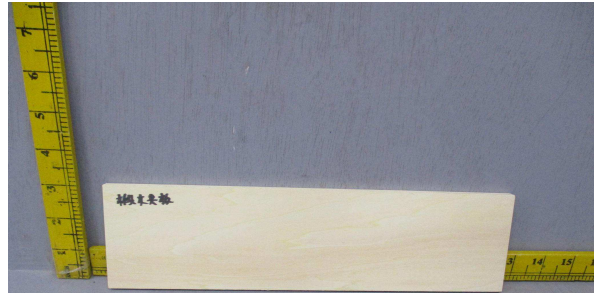
- Chromium VI: In house Ion-chromatography analysis

- Organic tin: EN71 part 3:2013+A3:2018, Annex G by Gas Chromatography – Mass Spectroscopy analysis.

RESULTS:



Sample Number
85190780940A1



Sample Number
85190780940B1



Sample Number
85190780940C1



Sample Number
85190780940D1



Sample Number
85190780940E1



Sample Number
85190780940F1

RESULTS:



Sample Number
85190780940G1



Sample Number
85190780940H1



Sample Number
85190780940I1



Sample Number
85190780940J1



Sample Number
85190780940K1



Sample Number
85190780940L1

RESULTS:



Sample Number
85190780940M1



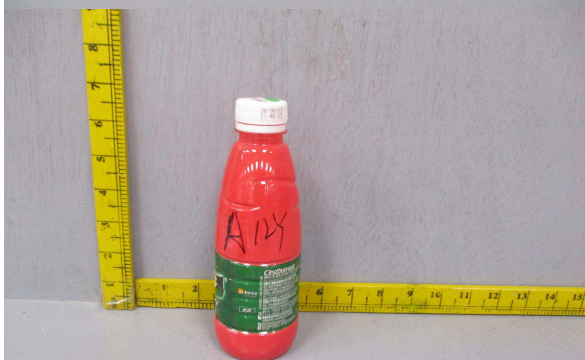
Sample Number
85190780940N1



Sample Number
85190780940O1



Sample Number
85190780940P1



Sample Number
85190780940Q1



Sample Number
85190780940R1

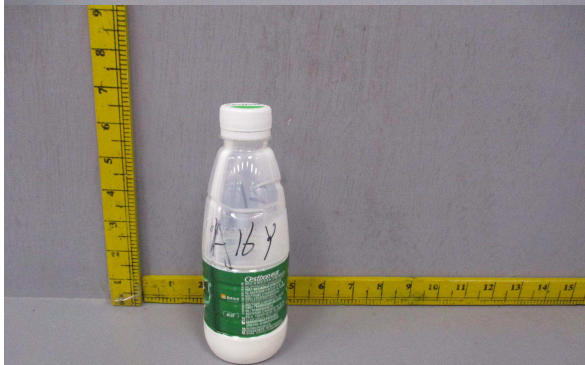
RESULTS:



Sample Number
85190780940S1



Sample Number
85190780940T1



Sample Number
85190780940U1



Sample Number
85190780940V1



Sample Number
85190780940W1



Sample Number
85190780940X1

RESULTS:



Sample Number
85190780940Y1



Sample Number
85190780940Z1



Sample Number
85190780940AA1



Sample Number
85190780940AB1



Sample Number
85190780940AC1

END OF REPORT